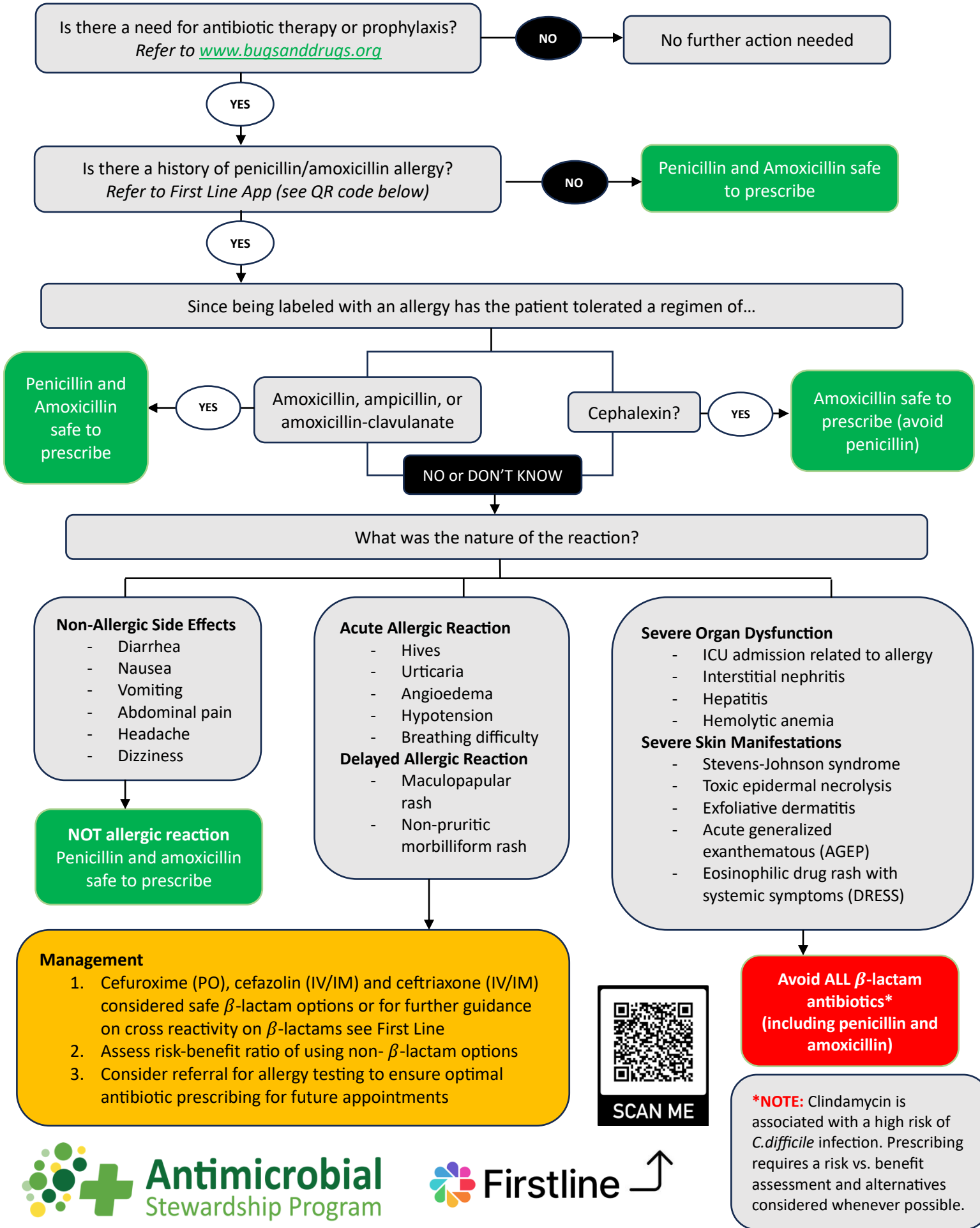


Management of Penicillin/Amoxicillin Allergic Patients in Dental Practice

Adapted from BC Centre for Disease Control

<http://www.bccdc.ca/health-professionals/clinical-resources/antimicrobial-stewardship/dental-antimicrobial-stewardship>



***NOTE:** Clindamycin is associated with a high risk of *C.difficile* infection. Prescribing requires a risk vs. benefit assessment and alternatives considered whenever possible.